

1. Check tyre size for number of tubes to be applied.



2. For example: The 1400R20 tyre needs 6 tubes.



3. Evenly spread the tubes of lubricant inside the tyre.



4. If needed, use a bead spreader to improve access into the tyre. A bottle jack could also be used.



5. Apply tyre soap to the connection faces and the sides of the runflat.



6. IMPORTANT: Make sure the runflat is not inserted upside down.



7. The threaded connection needs to be at the bottom.



8. This is the correct side facing up.



9. Insert two runflat segments.



10. Bring two of the connections together.



11. Insert bolt and cone by hand and loosely connect.



12. If you lift the tyre, gravity will do the work and runflat will drop inside the tyre.



13. Lay the tyre flat again and insert the last segment.



14. Bring together two connections.



15. Insert bolt and cone by hand and loosely connect.



16. Lifting the tyre and rolling it will use gravity to bring together the last connection.



17. Last connection - fit bolt and cone.



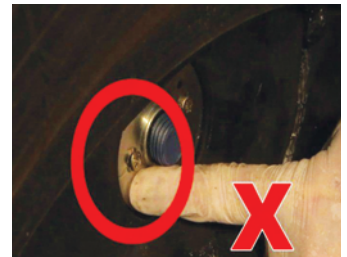
18. Tighten the connection using a 30mm socket.



19. Make sure bolt has passed through the locking ring - Be careful not to over tighten.



20. Torque to 55Nm.



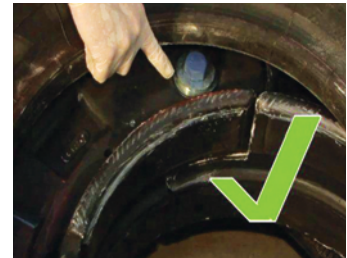
21. It is over tightened when the back-plate pulls down excessively and the screws start to protrude.



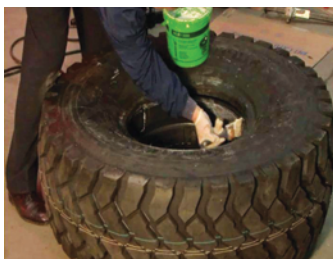
22. Tighten all three connections. Rolling the tyre makes this easy to do.



23. Drop the wheel flat. Put in wooden chocks to allow the forks of the lift truck to get access underneath.



24. Make sure the bolt heads are facing up.



25. Put plenty of tyre soap on the inside of the runflat.



26. Make sure you have tyre soap on the tyre bead also.



27. Lift the wheel and tyre.



28. Ensure the wheel also has plenty of tyre soap - NB The wheel also has wooden chocks to lift it off the floor.



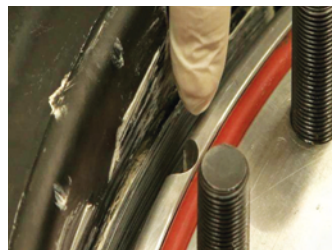
29. Slide the tyre and runflat onto the wheel - NB extra weight may be needed.



30. Fit the locking flange.



31. **IMPORTANT.** Note the position of the valve hole.



32. Make sure the valve hole is lined up with the valve port on the wheel.



33. Flange aligned on the wheel.



34. To pull down the flange, you will need M20 x 120 threaded bolts with nuts - NOT SUPPLIED.



35. Fit the M20 bolts and connect the nuts by hand.



36. Ready to be pulled down.

TYRON

Flat Tyre Protection

www.tyron.com

www.tyron-japan.com

Fitting Instructions for 20" Bolt-together Alloy wheel with ATR (All Terrain Runflat) 4



37. Ready to be pulled down.



38. Working opposite clamping bolts, one at a time, tighten them so the flange comes together equally.



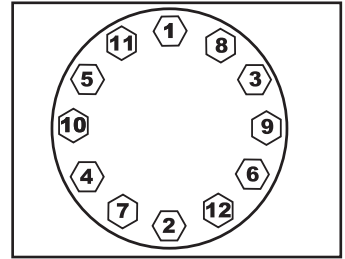
39. Tighten each clamping bolt in short bursts.



40. Fit the locking nuts and tighten down at least 4 nuts opposite each other using a 24mm socket.



41. You can now remove the clamping bolts and fit the rest of the 22 locking nuts.



42. Use the above star nut tightening pattern for the outer bolt circle.



43. Torque the 22 nuts to 217 Nm using this criss-cross method.



44. Apply some thread sealer to the valve.



45. Fit the tyre valve and tighten.



TYRON

Flat Tyre Protection

Tyron Developments Ltd
Castle Business Park,
Pavilion Way,
Loughborough,
Leicestershire. LE11 5GW
Tel: +44 (0)845 4000 900.
Fax: +44 (0)845 4000 700
email: tony@tyron.com.
www.tyron.com